

[illegible]

## **Read this First**

This product is made by advanced technology and passed reliability and compatibility test. Product quality can be guaranteed.

This is an operation guide for Network camera user.

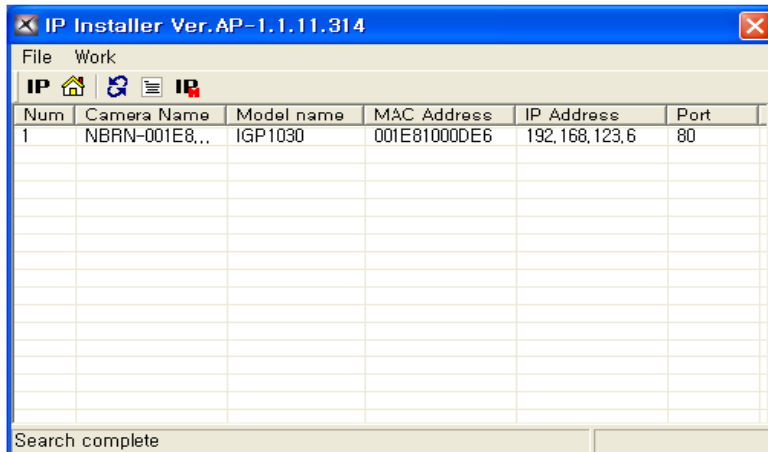
If you are first user of Network camera, even though you are experienced with similar products like this, we recommend you to read this manual carefully and follow the instructions inside before using this product.

## **CAUTION**

- The copyright of this manual belongs to original manufacturer.
- We do not guarantee, if your system is damaged by your mis-using disapproval components or mis-operation.
- If you have any problems or questions with our product, please contact the dealer you bought from or original manufacturer.
- If you need to open the system for modification or repairing, it is recommended that you have to request an engineer's assistance by contacting the dealer you bought it from or original manufacturer.
- This product has certification for domestic and industrial use. Also, it has taken CE for Europe, FCC for the U.S.

# IP Installer

In order to connect to Network camera from Client Program, IP address should be assigned to Network camera. IP Installer is a utility program that search devices and assign IP address



Here is a brief explanation of each menu and icon.

 Menu

## File

Exit : End this program.

## Work

Home Page : Open network camera web page in a new window

Set IP Address : Assign IP address

Set IP Address using Serial Number: Assign IP address via serial number when network camera is not on the network camera search result list.

Properties : Display network camera properties.

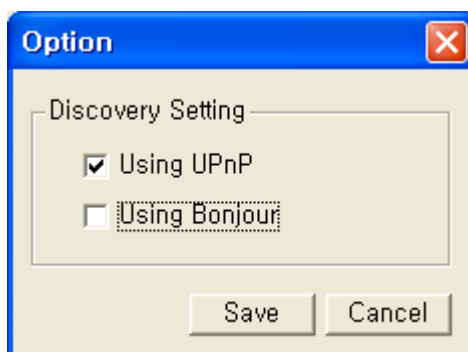
Refresh : Refresh the network camera list.

## Option

## Discovery Setting

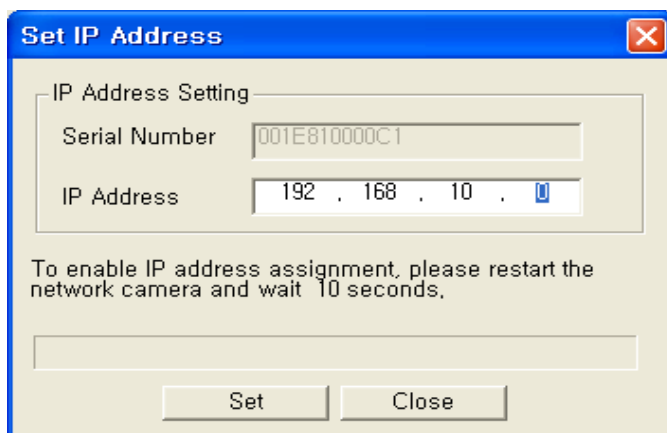
Using UPnP : Use UPnP when searching network camera.

Using Bonjour : Use Bonjour when searching network camera.



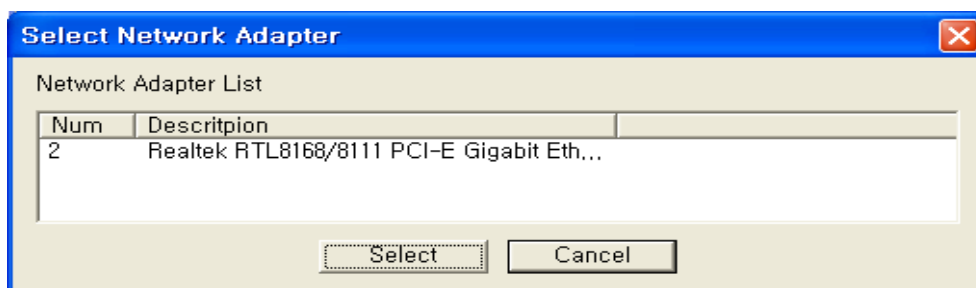
Icon

**IP** : Assign IP address to selected network camera.



The 'Set IP Address' dialog box has a title bar with a close button. It contains a group box 'IP Address Setting' with two text input fields: 'Serial Number' (containing '001E810000C1') and 'IP Address' (containing '192 . 168 . 10 . 0'). Below the fields is a message: 'To enable IP address assignment, please restart the network camera and wait 10 seconds.' At the bottom are 'Set' and 'Close' buttons.

Please input IP address and click Set button.



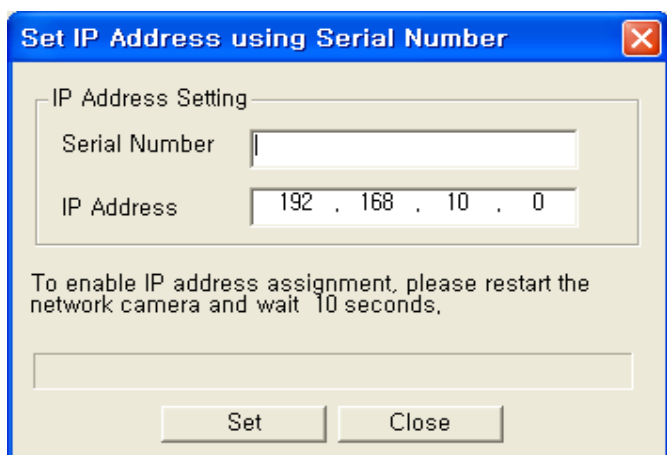
The 'Select Network Adapter' dialog box has a title bar with a close button. It contains a table titled 'Network Adapter List' with two columns: 'Num' and 'Description'. The table has one row with '2' in the 'Num' column and 'Realtek RTL8168/8111 PCI-E Gigabit Eth...' in the 'Description' column. At the bottom are 'Select' and 'Cancel' buttons.

Num	Description
2	Realtek RTL8168/8111 PCI-E Gigabit Eth...

Select a network device, then click Select button.

IP address is assigned to network camera.

**IP** : Assigns IP address to the selected network camera using Serial Number



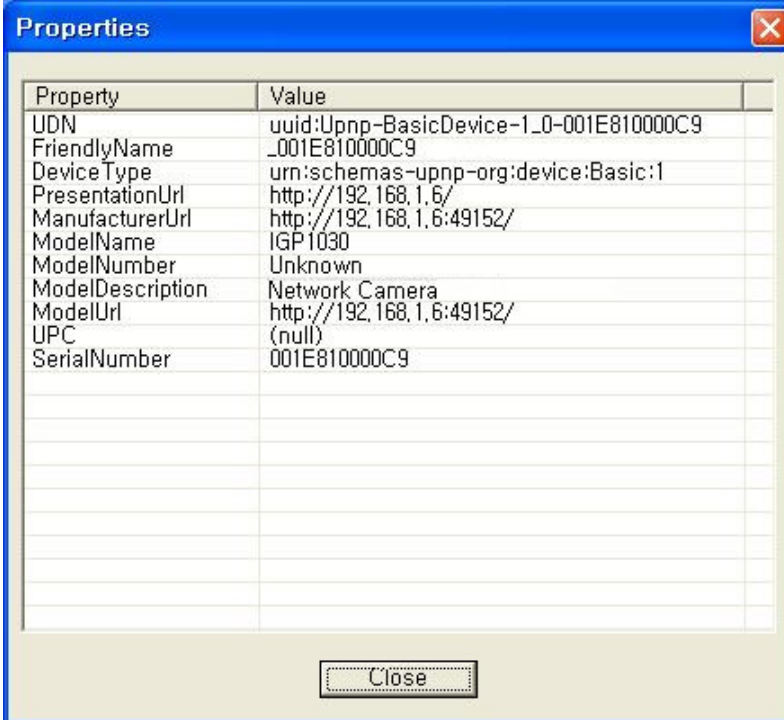
The 'Set IP Address using Serial Number' dialog box has a title bar with a close button. It contains a group box 'IP Address Setting' with two text input fields: 'Serial Number' (empty) and 'IP Address' (containing '192 . 168 . 10 . 0'). Below the fields is a message: 'To enable IP address assignment, please restart the network camera and wait 10 seconds.' At the bottom are 'Set' and 'Close' buttons.

[illegible]

### Display searched network camera



: Verify selected network camera information.



The screenshot shows a 'Properties' dialog box with a table of properties. The table has two columns: 'Property' and 'Value'. The properties listed are UDN, FriendlyName, DeviceType, PresentationUrl, ManufacturerUrl, ModelName, ModelNumber, ModelDescription, ModelUrl, UPC, and SerialNumber. The values are: uuid:Upnp-BasicDevice-1\_0-001E810000C9, \_001E810000C9, urn:schemas-upnp-org:device:Basic:1, http://192.168.1.6/, http://192.168.1.6:49152/, IGP1030, Unknown, Network Camera, http://192.168.1.6:49152/, (null), and 001E810000C9. There is a 'Close' button at the bottom right of the dialog box.

Property	Value
UDN	uuid:Upnp-BasicDevice-1_0-001E810000C9
FriendlyName	_001E810000C9
DeviceType	urn:schemas-upnp-org:device:Basic:1
PresentationUrl	http://192.168.1.6/
ManufacturerUrl	http://192.168.1.6:49152/
ModelName	IGP1030
ModelNumber	Unknown
ModelDescription	Network Camera
ModelUrl	http://192.168.1.6:49152/
UPC	(null)
SerialNumber	001E810000C9

Close